

Jefferson County 911 Communications



Year End Report
2015

JEFFERSON COUNTY COMMUNICATIONS REPORT FOR 2015

The following report is developed to show the activity of Jefferson County 911 Communications along with the emergency services that we dispatch. Totals are derived from the computer aided dispatch system, along with the Zetron Max 911 phone controller. Call totals may not be as exact as your individual department records. However, records should be close enough to use if needed for your own cause. Please feel free to utilize this report when necessary.

Total incidents for 2015 (EMA, EMA, Fire/Rescue, Police, Public Works)	67,550	2,111	Increase
Total 9-1-1 calls handled in 2015	26,172	1,010	Increase
Total Administrative calls handled in 2015	68,847	34	Increase
Total EMS calls for 2015	12,873	652	Increase
Total EMA calls for 2015	360	51	Increase
Total Fire/Rescue calls for 2015	4,309	74	Decrease
Total Law Enforcement calls handled in 2015	49,602	1,433	Increase
Total Public Works calls handled in 2015	406	49	Increase

Daily Averages:

9-1-1 calls	72
Administrative Calls	189
Total Phone Calls	260
EMS Calls	35
EMA Calls	1
Fire/Rescue Calls	12
Police Calls	136
Public Works Calls	1

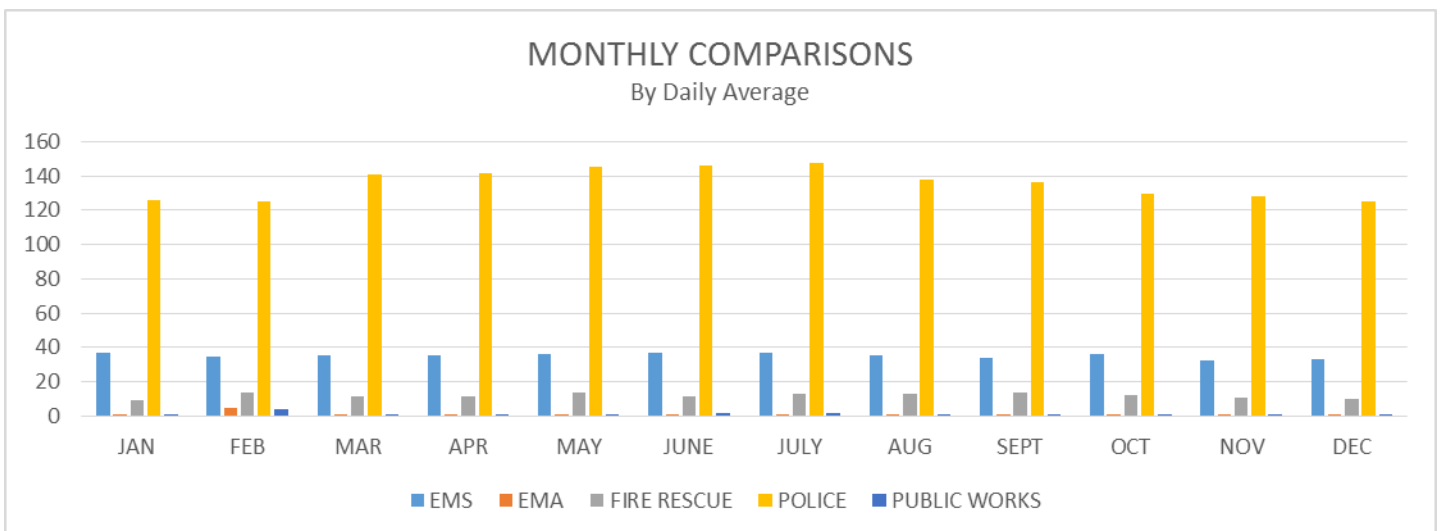
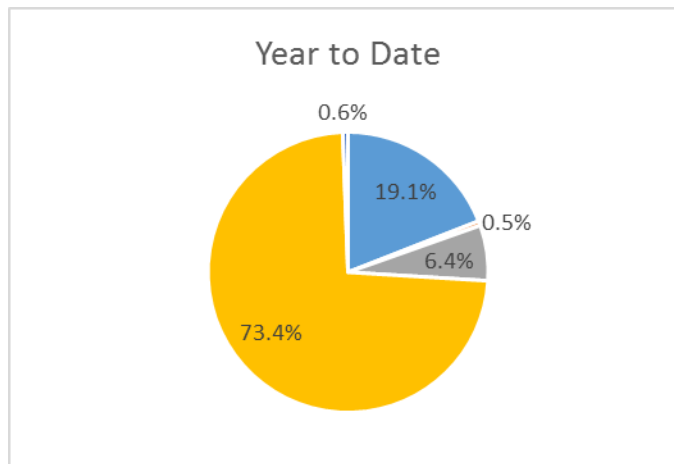
Busiest Day of the Week: Thursday

Busiest Hour of the Day: 15:00 – 16:00



Jefferson County Communications 2015 Communications Report

Calls for Service	JAN	FEB	MAR	APR	MAY	JUNE	JULY	AUG	SEPT	OCT	NOV	DEC	Total
EMS CFS	1,136	975	1,102	1,068	1,110	1,106	1,150	1,086	1,021	1,110	977	1,032	12,873
EMA CFS	13	135	19	15	21	10	29	28	28	33	10	19	360
Fire & Rescue CFS	286	382	358	338	414	337	396	398	405	367	311	317	4,309
Police CFS	3,909	3,498	4,367	4,243	4,515	4,383	4,574	4,268	4,092	4,023	3,852	3,878	49,602
Public Works CFS	18	108	26	25	21	42	46	17	30	19	20	34	406
Total Calls for Service	5,362	5,098	5,872	5,689	6,081	5,878	6,195	5,797	5,576	5,552	5,170	5,280	67,550
EMS % of Total	21.2%	19.1%	18.8%	18.8%	18.3%	18.8%	18.6%	18.7%	18.3%	20.0%	18.9%	19.5%	19.1%
EMA % of Total	0.2%	2.6%	0.3%	0.3%	0.3%	0.2%	0.5%	0.5%	0.5%	0.6%	0.2%	0.4%	0.5%
Fire & Rescue % of Total	5.3%	7.5%	6.1%	5.9%	6.8%	5.7%	6.4%	6.9%	7.3%	6.6%	6.0%	6.0%	6.4%
Police % of Total	72.9%	68.6%	74.4%	74.6%	74.2%	74.6%	73.8%	73.6%	73.4%	72.5%	74.5%	73.4%	73.4%
Public Works % of Total	0.3%	2.1%	0.4%	0.4%	0.3%	0.7%	0.7%	0.3%	0.5%	0.3%	0.4%	0.6%	0.6%
Avg. Daily EMS	37	35	36	36	36	37	37	35	34	36	33	33	35
Avg. Daily EMA	0.4	5	1	1	1	0.3	1	1	1	1	0.3	1	1
Avg. Daily Fire & Rescue	9	14	12	11	13	11	13	13	14	12	10	10	12
Avg. Daily Police	126	125	141	141	146	146	148	138	136	130	128	125	136
Avg Daily Public Works	1	4	1	1	1	1	1	1	1	1	1	1	1
Avg. Daily Total	173	182	189	190	196	196	200	187	186	179	172	170	185
9-1-1 Calls	1,885	1,840	1,986	2,026	2,261	2,367	2,656	2,337	2,348	2,256	2,089	2,121	26,172
Avg. Daily 9-1-1	61	66	64	68	73	79	86	75	78	73	70	68	72
Admin Calls	5,580	5,360	5,833	5,953	6,027	5,847	6,419	5,803	5,686	5,792	5,264	5,283	68,847
Avg. Admin Calls	180	191	188	198	194	195	207	187	190	187	175	170	189
Total Calls	7,465	7,200	7,819	7,979	8,288	8,214	9,075	8,140	8,034	8,048	7,353	7,404	95,019
Avg. Total Calls	241	257	252	266	267	274	293	263	268	260	245	239	260



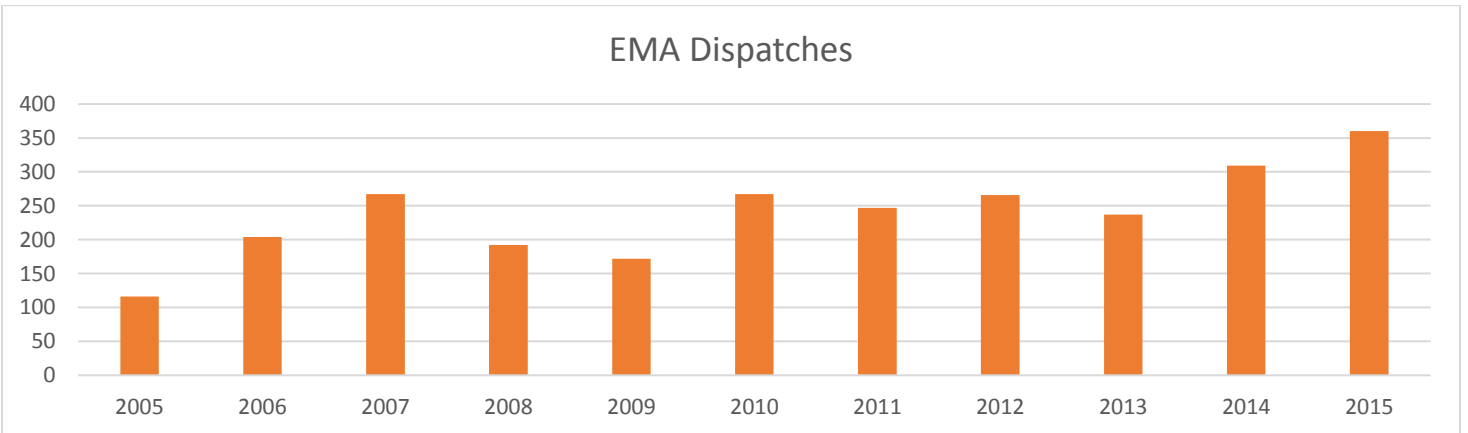
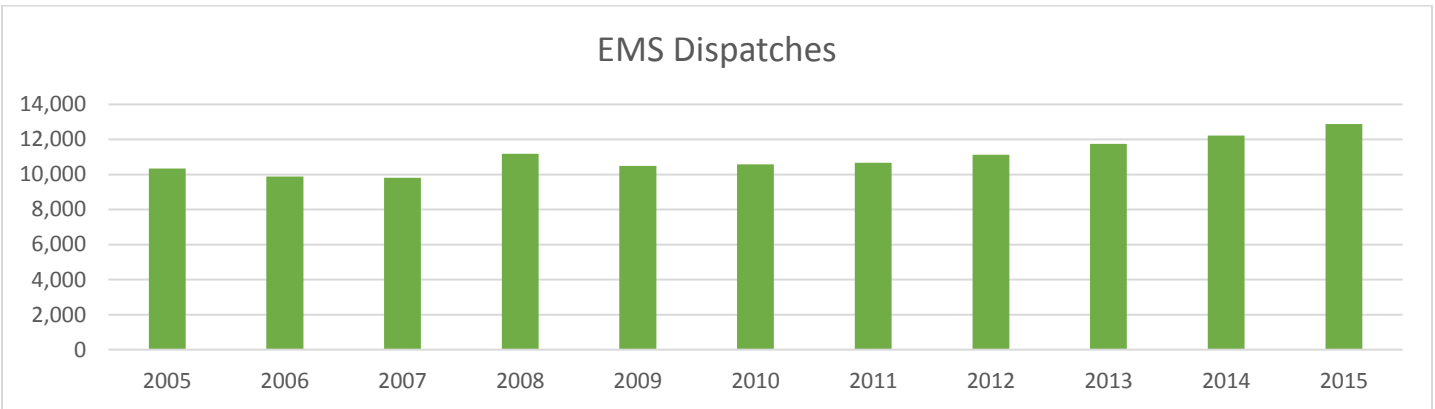
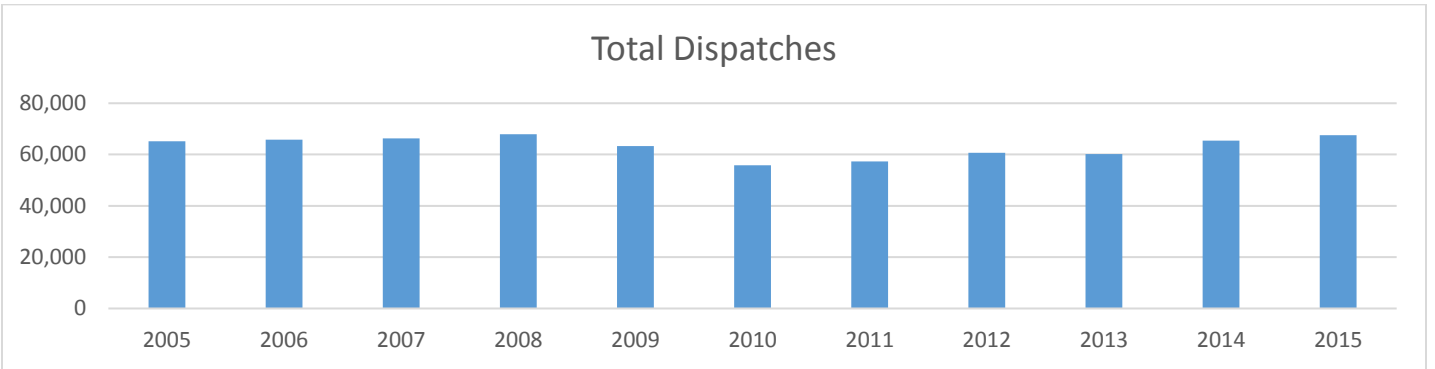
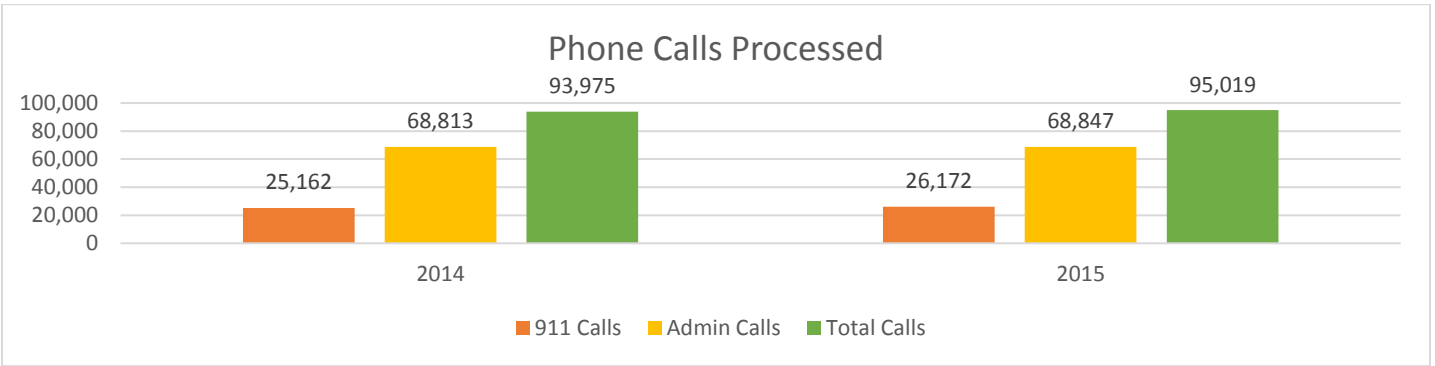


Jefferson County Communications
Annual Comparisons

Year	EMS	EMA	Fire & Rescue	Police	Public Works	Total CFS	911 Calls	Admin Calls	Total Calls	EMS % Change	EMA % Change	Fire & Rescue % Change	Police % Change	Public Works % Change	Total CFS % Change	911 Calls % Change	Admin Calls % Change	Total Calls % Change	
2005	10,346	116	4,496	50,237		65,195													
2006	9,884	204	3,290	52,370		65,748				-4.5%	75.9%	-26.8%	4.2%		0.8%				
2007	9,818	267	3,696	52,472		66,253				-0.7%	30.9%	12.3%	0.2%		0.8%				
2008	11,177	192	3,935	52,578		67,882				13.8%	-28.1%	6.5%	0.2%		2.5%				
2009	10,482	172	6,905	45,694		63,253				-6.2%	-10.4%	75.5%	-13.1%		-6.8%				
2010	10,585	267	3,798	41,191		55,841				1.0%	55.2%	-45.0%	-9.9%		-11.7%				
2011	10,668	247	3,769	42,681		57,365				0.8%	-7.5%	-0.8%	3.6%		2.7%				
2012	11,131	266	4,964	44,040	245	60,646				4.3%	7.7%	31.7%	3.2%		5.7%				
2013	11,741	237	4,316	43,629	297	60,220				5.5%	-10.9%	-13.1%	-0.9%	21.2%	-0.7%				
2014	12,221	309	4,383	48,169	357	65,439	25,162	68,813	93,975	4.1%	30.4%	1.6%	10.4%	20.2%	8.7%				
2015	12,873	360	4,309	49,602	406	67,550	26,172	68,847	95,019	5.3%	16.5%	-1.7%	3.0%	13.7%	3.2%	1.5%	0.1%	1.5%	



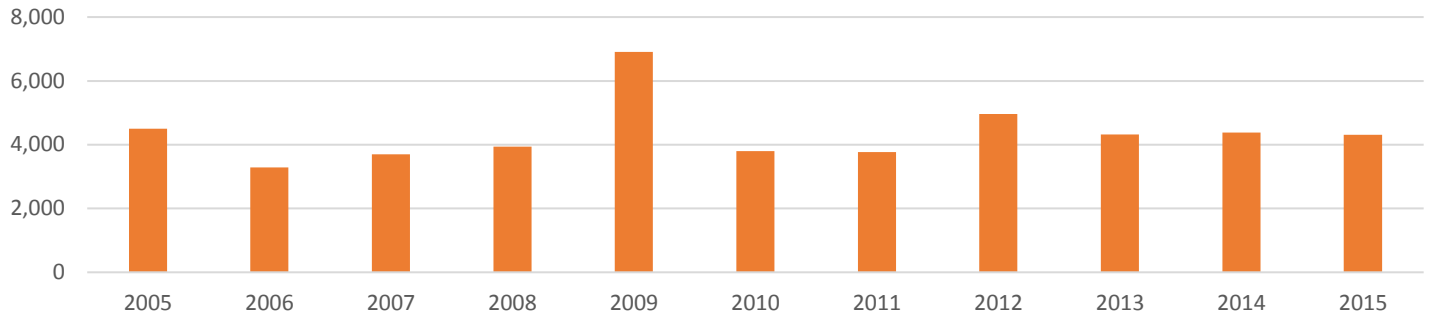
Jefferson County Communications Annual Totals



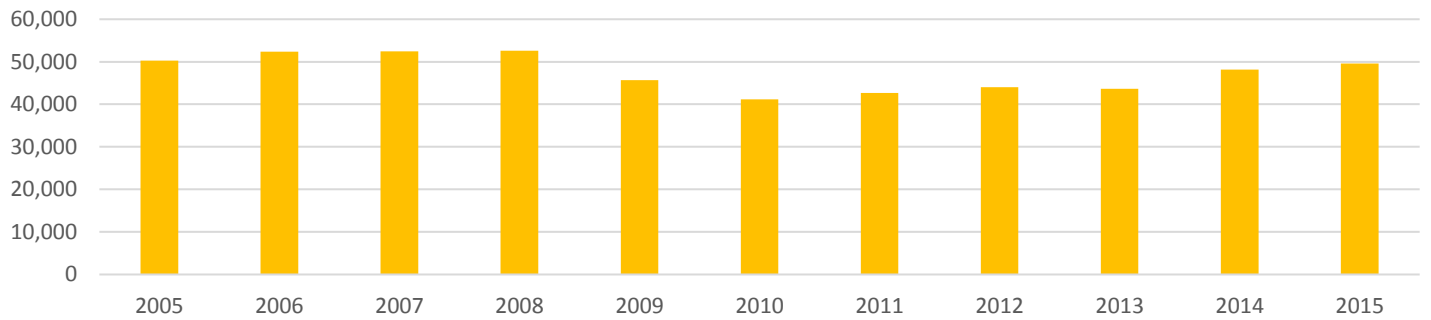


Jefferson County Communications Annual Totals

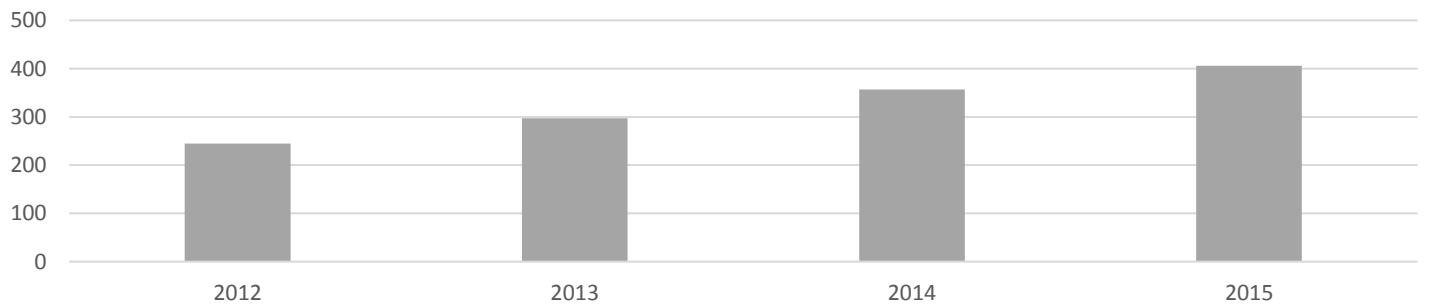
Fire/Rescue Dispatches



Police Dispatches



Public Works Dispatches





Jefferson County Communications
2015 Number of Incidents - By Department

2015	JAN	FEB	MAR	APR	MAY	JUNE	JULY	AUG	SEPT	OCT	NOV	DEC	YTD
Air Medical	2	2	2	9	6	3	7	6	10	8	4	1	60
Baneberry Police	16	4	9	7	11	5	10	6	0	1	26	26	121
Baneberry Fire	5	7	8	10	10	5	10	5	3	7	5	4	79
Carson Newman Security	5	7	8	7	6	4	2	8	8	6	6	6	73
Chestnut Hill Fire	12	16	10	13	18	16	13	9	15	21	14	11	168
Dandridge Police	270	358	358	390	463	350	436	392	372	333	293	268	4283
Dandridge Fire	38	65	48	33	69	51	66	60	67	60	56	37	650
Jefferson City Fire	106	120	119	115	133	123	102	125	115	112	87	107	1364
Jefferson City Police	990	789	1060	1072	1099	1202	1089	1132	1024	992	999	942	12390
Jefferson County Constables	27	15	28	28	41	12	22	29	22	31	51	16	322
Jefferson County EMA	13	135	19	15	21	10	29	28	28	33	10	19	360
Jefferson County EMS	1134	973	1100	1059	1104	1103	1143	1080	1011	1102	973	1031	12813
Jefferson County Rescue Squad	34	53	41	39	54	39	61	68	69	52	41	40	591
Jefferson County Sheriff	2080	1901	2342	2181	2229	2289	2411	2069	2065	2118	2018	2159	25862
Kansas Talbott Fire	5	11	12	11	11	7	8	10	13	11	9	16	124
Lakeway Central Fire	18	20	26	15	27	14	27	24	22	20	19	20	252
New Market Police	151	91	146	178	198	153	181	172	177	124	65	63	1699
New Market Fire	13	37	39	34	32	22	31	33	37	28	20	31	357
Out of County Response	0	5	0	1	0	0	2	1	3	0	1	1	14
Parrotts Chapel Fire	1	1	0	0	1	1	2	2	0	1	0	1	10
Public Works	18	108	26	25	21	42	46	17	30	19	20	34	406
THP/TVA/TWRA	77	119	120	113	137	155	162	140	140	135	133	153	1584
White Pine Police	293	214	296	267	331	213	261	320	284	283	261	245	3268
White Pine Fire	54	47	55	67	59	59	74	61	61	55	59	49	700
Total Calls for Service by Department	5362	5098	5872	5689	6081	5878	6195	5797	5576	5552	5170	5280	67550



Jefferson County Communications

Day of the Week Time of Day Call for Service Statistics

Time of Day	
0:00	1985
1:00	1605
2:00	1318
3:00	1101
4:00	1082
5:00	1174
6:00	1084
7:00	2748
8:00	2820
9:00	3470
10:00	3902
11:00	3513
12:00	3331
13:00	3620
14:00	4248
15:00	4281
16:00	3831
17:00	3438
18:00	3154
19:00	3629
20:00	3595
21:00	3329
22:00	2709
23:00	2366

Day of the Week						
Sunday	Monday	Tuesday	Wednesday	Thursday	Friday	Saturday
7,657	10,149	10,124	10,101	10,237	10,139	8,926



Jefferson County Communications 2015 - Incident Types

Call Type	Count	Call Type	Count	Call Type	Count
911 Open Line Hang Up Misdial	698	Fire Inspection	698	Robbery	1
Abdominal Pain	198	Fire Mutual Aid	24	Scheduled Patient Transport	1554
Active Shooter	1	Fire Other	70	Seizures	214
Aircraft High Jacking	0	Fire Prevention	13	Shooting	8
Aircraft Incident	1	Fire Residential Structure	71	Shoplifter	105
Alarm	1990	Fire Smoke Investigation	102	Sick Person	852
Alarm Carbon Monoxide	7	Fire Vehicle	77	Stabbing	2
Alarm Medical Alert	110	Follow up Investigation	447	Stalking	1
Allergic Reaction	46	Forgery	17	Stolen Vehicle	103
Amputations	0	Fraud	180	Stroke	205
Animal Bites	60	Gas Leak	39	Suicidal Caller	131
Assault	151	Harassment	281	Suspicious Package	12
Back Pain	108	Hazmat Incident	5	Suspicious Person or Vehicle	3124
Bleeding Controlled	36	Head Injury	19	SW Warrant Service	4933
Bleeding Non Controlled	117	Headache	26	SZ School Zone	1494
BOLO Be on Lookout	179	Heat Exposure	4	Theft	818
Bomb Threat	3	Hit and Run No-Injuries	231	Traffic Enforcement	422
Breathing Problems	975	Hit and Run Injuries	5	Traffic Problem	63
Burglary Business	25	Hostage Incident	1	Traffic Stop	8859
Burglary Residence	282	Identity Theft	32	Trauma	337
Burglary Vehicle	51	Indecent Exposure	7	Trespass	68
Burns	5	Investigation	2911	Unconscious or Unresponsive	317
Call by Phone	1788	Juvenile Problem	174	Unknown Medical Problem	70
Carbon Monoxide Inhalation	1	Lifting Assistance	297	Vandalism	275
Cardiac Arrest	81	Lock Out	1	Welfare Check	642
Change in Mental Status	322	LZ Helicopter Landing Zone	97		
Chest Pain or Heart Problems	713	Missing Person	72		
Child Birth	16	Motorist Assist	1552		
Child Exploitation	1	MVC Injury Motor Vehicle Crash	489		
Choking	15	MVC Non Injury Motor Vehicle Cr	1689		
Cold Exposure	2	Narcotics Investigation	103		
Convalescent Transport	4339	Nausea Vomiting	213		
Death Investigation	68	Officer Initiated	904		
Deliver Message	144	Order of Protection	168		
Diabetic Problems	194	Overdose Poisoning	56		
Disturbance	1352	Property Check	2060		
Disturbed Person	55	Property Lost or Found	99		
Domestic Disturbance	738	Prostitution	1		
Electrical Hazard	1	Prowler	12		
Electrocution	1	Public Assist	36		
Erroneous Entry	175	Pursuit	29		
Escort	996	Reckless Driver	1734		
Eye Injury or Problems	5	Rescue Boating Assist	15		
Fainting	5	Rescue Confined Spaces	2		
Falls	333	Rescue Elevator Rescue	2		
Fingerprinting	44	Rescue High Angle Rescue	1		
Fire Alarm Commercial	159	Rescue Search	16		
Fire Alarm Residential	148	Rescue Standby	146		
Fire Brush Grass Forest	93	Rescue Structure Collapse	10		
Fire Chimney Fire	8	Rescue Water	4		
Fire Commercial Structure	19	Road Closure	26		
Fire Explosion	2	Road Hazard	811		



Jefferson County Communications

Unit Calls for Service Statistics - Law Units

Baneberry Police			Jefferson City Police			THP/TVA/TWRA		
Rank	Unit	CFS	Rank	Unit	CFS	Rank	Unit	CFS
1	1502	122	15	A3	753	1	THP	1547
2	1501	69	16	B1	651	2	TWRA	43
Carson Newman Security			17	B6	514	White Pine Police		
Rank	Unit	CFS	18	107	265	Rank	Unit	CFS
1	CNC Securi	75	19	D3	214	1	209	800
Dandridge Police			20	T2	202	2	205	747
Rank	Unit	CFS	21	D2	201	3	208	712
1	306	904	22	E2	199	4	207	519
2	311	881	23	D4	188	5	202	495
3	304	787	24	106	183	6	206	491
4	309	685	25	A9	180	7	203	279
5	305	647	26	E4	178	8	201	173
6	308	592	27	101	159	9	204	75
7	307	545	28	105	152	10	212	69
8	310	391	29	B9	144	11	213	22
9	303	54	30	D1	144	12	219	15
10	312	50	31	E3	143	13	216	8
11	302	44	32	104	124	14	217	7
12	301	42	33	A10	46	15	215	6
13	314	32	34	102	25	16	210	4
14	313	26	35	108	25			
15	317	22	36	E1	4			
16	318	19	Constables					
17	315	17	Rank	Unit	CFS			
18	319	9	1	C11	197			
19	316	8	2	C7	63			
20	322	3	3	C4	27			
21	320	1	4	C3	24			
Jefferson City Police			5	C10	12			
Rank	Unit	CFS	6	C9	8			
1	B5	1330	7	C8	2			
2	T1	1280	8	C6	1			
3	B7	1236	New Market Police					
4	B8	1153	Rank	Unit	CFS			
5	A8	1096	1	505	759			
6	A1	1041	2	504	419			
7	B2	1017	3	502	204			
8	A2	1007	4	501	363			
9	A5	986	New Market Police					
10	A4	968	Rank	Unit	CFS			
11	A7	948	1	505	759			
12	B3	946	2	504	419			
13	B4	934	3	502	204			
14	A6	848	4	501	363			



Jefferson County Communications

Unit Calls for Service Statistics - Law Units

Jefferson County Sheriff					
Rank	Unit	CFS	Rank	Unit	CFS
1	1142	1563	45	1102	89
2	1117	1451	46	1101	62
3	1321	1406	47	1103	60
4	1127	1300	48	1130	58
5	1118	1204	49	1146	41
6	1138	1190	50	1107	40
7	1109	1147	51	1162	34
8	1129	1125	52	1159	32
9	1113	1080	53	1154	31
10	1322	1027	54	1106	30
11	1145	1019	55	1124	25
12	1126	998	56	1179	20
13	1134	995	57	JAIL	20
14	1112	889	58	1105	14
15	1120	886	59	1163	11
16	1133	878	60	1160	7
17	1147	871	61	1158	5
18	1144	863	62	1156	3
19	1140	857	63	1152	2
20	1123	809	64	1164	2
21	1136	769	65	1170	2
22	1148	763			
23	1141	737			
24	1149	728			
25	1115	721			
26	1116	617			
27	1114	595			
28	1132	552			
29	1139	547			
30	1128	464			
31	1104	401			
32	1110	377			
33	1178	370			
34	1108	317			
35	1166	282			
36	1143	274			
37	1135	236			
38	1122	224			
39	1121	211			
40	1111	196			
41	1168	192			
42	1119	158			
43	1125	132			
44	1131	125			



Jefferson County Communications

Unit Calls for Service Statistics - EMS Units

Jefferson County EMS			Jefferson County EMA			Air Medical		
Rank	Unit	CFS	Rank	Unit	CFS	Rank	Unit	CFS
1	M3	1971	1	EMA 1	88	1	AirMed	60
2	M5	1744	2	EMA 3	77			
3	M1	1709	3	EMA 2	62			
4	M2	1552	4	EMA 5	61			
5	M4	1277	5	EMA 4	57			
6	M11	1264	6	ON CALL	48			
7	M15	1211						
8	M12	1011						
9	M6	1011						
10	M7	719						
11	M8	75						
12	M9	33						
13	M10	28						
14	M13	3						
15	M14	2						



Jefferson County Communications

Unit Calls for Service Statistics - Fire Units

Baneberry Fire			Dandridge Fire			Rescue Squad		
Rank	Unit	CFS	Rank	Unit	CFS	Rank	Unit	CFS
1	1401	32	18	728	17	18	RS58	8
2	1404	1	19	742	13	19	RS66	8
3	1405	2	20	707	12	20	RS4	7
4	1407	2	21	718	9	21	RS63	7
5	1413	1	22	725	9	22	RS3	6
6	1416	2	23	D775	8	23	RS8	6
7	1418	2	24	743	7	24	RS32	5
8	1419	1	25	DUT779	7	25	RS21	3
9	1425	1	26	706	3	26	RS35	3
10	BEN10	71	27	762	3	27	RS39	3
Chestnut Hill Fire			28	723	2	28	CORS30	2
Rank	Unit	CFS	29	741	2	29	RS19	2
1	CHTK906	66	30	763	2	30	RS31	2
2	902	35	31	719	1	31	RS33	2
3	903	33	32	DEN782	1	32	RS47	2
4	CHTK907	25	Jefferson City			33	RS64	2
Rank	Unit	CFS	Rank	Unit	CFS	34	RS7	2
1	JCEN1	618	1	JCEN1	618	35	CORS38	1
2	JCEN2	446	2	JCEN2	446	36	RS10	1
3	JCSQ1	420	3	JCSQ1	420	37	RS12	1
4	JCUT1	53	4	JCUT1	53	38	RS16	1
5	JCEN6	44	5	JCEN6	44	39	RS28	1
6	JCCF1	16	6	JCCF1	16	40	RS44	1
7	JCTK1	9	7	JCTK1	9	41	RS49	1
8	JCEN4	2	8	JCEN4	2	42	RS50	1
Dandridge Fire			Rescue Squad			43	RS52	1
Rank	Unit	CFS	Rank	Unit	CFS	44	RS62	1
1	DTK770	294	1	CORS29	484	45	RS78	1
2	DEN772	175	2	CORS32	244			
3	DEN771	134	3	RS11	166			
4	DEN774	132	4	CORS34	165			
5	701	125	5	CORS31	84			
6	DTN780	92	6	RS48	58			
7	DEN776	67	7	CORS35	39			
8	703	52	8	CORS33	35			
9	702	51	9	RS80	35			
10	744	36	10	RS2	30			
11	DSUP781	36	11	RS59	25			
12	752	35	12	CORS39	20			
13	704	29	13	CORS40	20			
14	705	29	14	RS1	17			
15	DEN777	28	15	RS9	12			
16	DTK778	25	16	RS34	10			
17	708	21	17	RS29	9			



Jefferson County Communications

Unit Calls for Service Statistics - Fire Units

Kansas Talbott			Lakeway Central			Out of County		
Rank	Unit	CFS	Rank	Unit	CFS	Rank	Unit	CFS
1	KTUT885	48	27	436	1	1	NVKFD	8
2	KTCM884	39	28	LWTN491	1	2	WHFD	4
3	KTTK887	32	New Market			3	CCFD	1
4	801	29	Rank	Unit	CFS	Parrotts Chapel		
5	KTEN882	25	1	NMTK1	134	Rank	Unit	CFS
6	KTEN886	21	2	NMRS1	131	1	1602	9
7	807	16	3	601	106	2	1605	4
8	802	13	4	NMEN3	100	3	1607	4
9	803	8	5	NMEN1	41	4	1608	1
10	804	7	6	603	28			
11	814	4	7	624	23			
12	810	3	8	NMTN2	22			
13	809	2	9	NMUT2	21			
14	811	1	10	602	19			
15	818	1	11	605	19			
16	KTTK883	1	12	627	19			
Lakeway Central			13	606	18			
Rank	Unit	CFS	14	638	15			
1	427	97	15	613	12			
2	LWEN490	78	16	620	11			
3	LWTK493	76	17	NMTN1	10			
4	425	64	18	618	9			
5	LWEN496	37	19	NMTK2	9			
6	LWTN492	20	20	633	8			
7	405	18	21	614	7			
8	417	17	22	NMCR2	7			
9	402	14	23	634	6			
10	406	13	24	NMUT1	6			
11	LW495	13	25	629	5			
12	LWSUP494	13	26	NMEN2	5			
13	428	8	27	611	4			
14	LWLAD497	8	28	628	3			
15	434	6	29	635	3			
16	408	5	30	NMCR1	3			
17	413	5	31	604	2			
18	407	4	32	608	2			
19	416	4	33	621	2			
20	403	3	34	610	1			
21	426	3	35	625	1			
22	401	1	36	630	1			
23	419	1	37	632	1			
24	420	1	38	636	1			
25	424	1	39	641	1			
26	433	1	40	644	1			



Jefferson County Communications

Unit Calls for Service Statistics - Fire Units

White Pine		
Rank	Unit	CFS
1	WPTK2	420
2	WPEN4	91
3	1201	74
4	1216	54
5	WPTN1	45
6	1205	39
7	WPCAR1	39
8	1207	28
9	WPEN1	25
10	WPBRU2	24
11	1206	17
12	1219	16
13	1213	12
14	1212	11
15	1246	11
16	WPBRU1	11
17	1220	10
18	1210	9
19	1218	9
20	1211	8
21	WPEN3	8
22	1208	7
23	WPCAR2	6
24	WPTK1	6
25	1229	5
26	1217	4
27	1223	4
28	1203	3
29	WPTN2	3
30	1202	1
31	1221	1
32	1222	1
33	1230	1
34	1235	1
35	1242	1
36	WPEN2	1